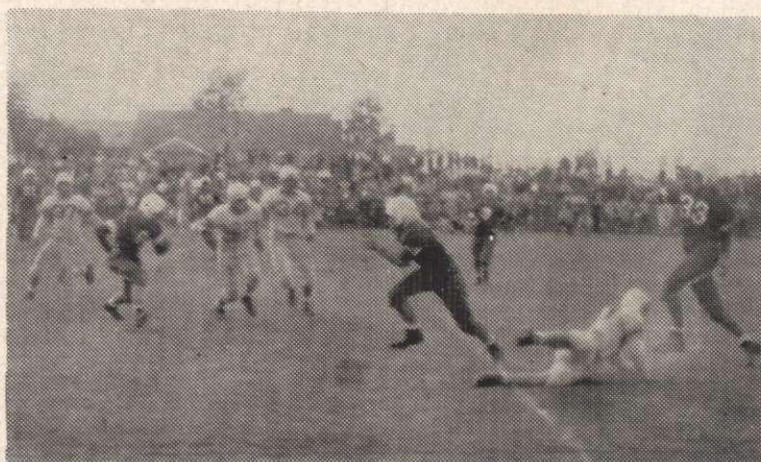




by Charlie Lewis
Aftermath

After a terrific and well-attended pep rally the night before, an underrated Blue and White Team from Port, not knowing what was in store for them, journeyed to Garden City. According to the facts and statistics Port was in no shape to meet the Trojans on Saturday. It had been said that the chips were stacked on the ability of Port's all around athlete, Ernie Jackson, and also that the Port line would be no match for the seasoned regulars of the Trojan powerhouse. It has also been said that statistics may be wrong, and in this case, rightly so. With the moral support of a large Port crowd, the under-rated Costello-men from Port went on to win their first game of the year from a team they were supposed to be no match for. Garden City received the opening kick off, and tried in their first plays to make a dent in the Port line, but to no avail. The will and effort of such Port linemen as Meyer, Ribar, Santicolli, Wiles, Cozza, Crouse, Schermerhorn, Utz, Nuzzelese, and Thomson could not be matched then in the first period, or to any great extent during the rest of the game. Coach Costello substituted freely and his boys demonstrated their abil-

Hobbins Scores on 69 Yard Drive



ity to make the grade. When Port got possession in the first period, Jackson, Hall, Dohm, Cutler, the backfield quartet, successfully moved the ball down field on a series of plays, and then set up the play for the first Port score. A pass into the deep left end-zone from Jackson to Gordy Meyer tallied for the Blue and White. Dohm missed the PAT. At this point I might mention that Dohm had been playing fine ball, but because of a blow on the shoulder, had to be removed from the playing field. Garden City threatened once or twice in the remaining minutes of the first period, but the overall passing of Ernie Jackson could not be stopped, and Port scored again on an end zone pass from Jackson to end Bill Thomson. During the second period it was just a matter of long marches, by both sides, and the ability to withstand the same. A recovery of a fumble by Port's Richie Mauro was just one of the factors leading to the Blue and White victory, along with the return of an intercepted pass by Lou Cozza. During this period, Garden City tallied on a run by Don Gallo.

In the third period, the superior blocking and tackling of the Port team proved to be of vital importance as several goal line assaults by Garden City were held. Such standouts were Mauro, Utz, Nuzzelese, Pollack, Ribar, Cutler, Hall, Wiles, and the ever present tactics of Jackson. It was in this period that the Blue and White clinched their victory.

From about the Port thirty, a few running plays failed to gain ground. On the next play John-

ny Hobbins received the ball, and with superior blocking and interference scooted sixty - nine yards for the third Port tally. In this period Garden City scored on a pass from Heiter to Farquahson. For the last period of

the game, Musselwhites, Roger and Ronnie, Gilbert, Pollack, Lincoln, Hamilton, and Spaulding were able to see action for the Blue and White. The game was finished when Port gained possession from a costly City fumble and never were they threatened from then on.

The final score was the Blue and White 18, and the Trojans 13.

The Big Day Is Tomorrow

Tomorrow the Costello-men will be out to avenge their setback to the Manhasset Indians. The score was 20-19, one of our only setbacks during last season. Can history be upset too?

RUSSELL BUICK

11 HAVEN AVENUE
Port Washington N. Y.



PO. 7-3030

PORT WASHINGTON
FLOWER SHOP

Costsonas Bros.

55 Main Street Phone PO 7-0088
10% Off on Corsages for Proms

John M. Welsby Co.

Commercial Stationers

Typewriters and Adding Machines
Sales and Service

103 Main St. Port Washington 7-1454

JOHN M. MARINO

"Port's Friendly Jeweler"

100 Main Street
PO-7-0079

ALECK Hair Stylists

Specialists

in Hairshaping

91 MAIN STREET
Port Washington 7-1933

CHADOW BROS.

27 MAIN STREET

Formal Suits for Rent
Tel. PO 7-0353

WILLOWDALE
SERVICE STATION

Port Washington Blvd.

& Willowdale Ave.
Port Washington 7-2461

NASSAU STORES

Your 5 & 10

JEWELRY - COSMETICS
SCHOOL SUPPLIES - GIFTS

THE CARD SHOP

Only Store Selling Both

Norcross and Hall Cards

Twixt A & P and Post Office

NORTH SHORE
TYPE CO.

57 Main Street

Sales - Repairs - Rentals
Exc. Royal Dist.

JACK MURRAY
HABERDASHER - CLOTHIER

18a Main Street

Port Washington, L. I.

Village Delicatessen

Home Made Salads

our Specialty

Quality Cold Cuts

22B Main Street

Port Washington 7-1811
E. Franzenburg

Bray's Furniture Store

J. H. Bray, Prop.

furniture - beds - bedding
floor covering, window shades
venetian blinds

136-138 Main Street
Port Washington 7-2288

Compliments of:

WEBERS BAKE SHOP

965 Port Washington Blvd.

Telephone: PO-7-3722

The Largest, Most Complete

Camera Store on Long Island

Eastern Camera Exchange

933 Port Washington Blvd. PO 7-0750

Phones Free Delivery Service
P. W. 1260-1261

CONRAD
SERVICE STATION

679 Port Washington Blvd.

PO. 7-2905

Pollock & Wysong, Inc.
BUILDERS

939 Port Washington Blvd.

Wm. A. Eaton

Hardware - Paints

Electrical and Plumbing Supplies

House Furnishings

Phone: P. W. 7-2336 55 Main St.

Get Your G.O.
for G.O. Specials

B. & L. ATHLETIC
SUPPLY, INC.

Port Washington 7-0866

F.T.D. Member

S. F. Falconer
GREENHOUSES

South Maryland Avenue
Port Washington, N. Y.

Any Age CAR OR DRIVER INSURED

EVERITT J. HEHN

INSURANCE

51 Main Street

Port Washington, N. Y.

Phone: PO. 7-0047

Vol. XX

G. C.
Hea

Mr. C.
Music i
Public S
presiden
cators
vice-pre
Intersch
Commis

Stu

Barry
Celerity
in schoo
sociate
ly, and
ary sta
include
ships.

In s
time i
ties, B
erage,
fourtee
the Se

Last
itor of
yearbo
ber of
tee. S
editor
first te

In
was
and
team

As
the y
Week
swim
educ
mers
selor

Ba
tend
Sweet
stud