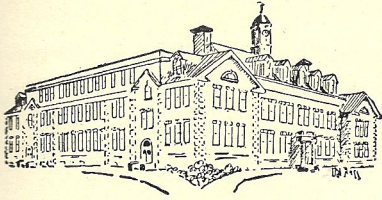


The Port Weekly

Volume III

Port Washington High School, Wednesday, October 20, 1926

Number 4



Editorial Comment

In years gone by fair play has been the back-bone of the activities of our High School. It has been characteristic of each individual sport, each hard-fought contest, not only in athletics but in dramatics as well. We have entered the fight with our minds bent on conquering our opponents, but on the other hand we have always been quick to accept defeat with a smile, realizing that, though defeated, we had at least exhibited a fine showing of clean tactics. Fair play should not be limited to the players alone, however but should be extended to the "side-lines." What satisfaction does one get out of "booing" and "hissing" an opponent, even though he might commit a misplay? Moreover, the attitude of the school as a whole is shown more explicitly in the cheering than in the actual combat.

In addition to fair play, great consideration should be given to team work. This not only includes the participants but also each individual member of the student body. A team without the moral support of each and every student may be likened to a ship without a sail.

If our fair play can be continued as it has been in the past and if our cheering squad can be augmented, it stands to reason that victory will be the fruit of our efforts.

Assembly

Friday, October 15, Mr. Lowry, President of the Board of Education, spoke to us about reading and its importance in our everyday life. His talk was interestingly varied by humorous anecdotes of his experiences as a salesman.

Bob Enscoe praised the school spirit of those who attended the game at Lawrence. Mr. Schrieber, in a few words, gave his opinion of our team as one which fights hard and is a good loser. The Spirit of Port!

Mr. Studley Should Know

Mr. Studley thinks that, since the boys of the Senior class are old enough to wear long pants and the girls are old enough to wear short dresses, they ought to know enough to keep quiet after the buzzer.

Honor Pupils

The pupils listed below have earned for the month of September the honor mark of 90% or over in one or more subjects. The number of subjects in which such mark was earned follows the name of the pupils who earned it in more than one subject:

Seniors — D. Alford, W. Baum, A. Beach, M. Cocks (2), F. Crooker (2), E. Graham, H. Hotopp, W. Leiber, F. Lippert (2), G. Luey (4), J. Marro, M. Raff (2), A. Smith, A. Stubbings (2), H. Stuetzer (3), R. Teta (2), E. VanSchaick, Ed. Varney (3).

11B Group — T. Allen, H. Burmeister (2), M. Hyde (2), M. Lien.

11A Group — C. Bansch, E. Duffield, A. Fleet, K. Grady, D. Helfrich, M. Hiller, R. Hiller, L. Keshishian, E. Knapp, R. MacDermid, J. McLaughlin, L. Morrison, J. Osborn (2), D. Read, E. Wallingford, M. Yorio.

10B Group — L. Dell, T. Fay, M. Herbert, M. Ryeck, P. Seraphine, D. Sullivan.

10A Group — E. Avery (2), J. Bird, *D. Burgess (3), D. Chase (3), B. Guilford, M. Haynes, E. Hewlett, J. Hopkins (4), M. Hunold, L. Lewthwaite (2), D. Lippert (2), D. Tench, C. Williamson.

9B Group — M. Birkel, T. Leyden (3), M. Rankin, C. Story.

9A Group — J. Atwood, K. Burns, R. Guilford (2), D. Hiller, J. Lawrence, J. Mortimer, W. Richards, R. Thompson (3), E. Wackwitz, M. Welsh, E. Wilson.

Seniors earned 32 honor marks; Juniors, 22; Sophs, 30; Freshmen, 20.

Three pupils, Herman Stuetzer, Medora Hyde, and Dorothy Burgess earned an average of over 90% in all subjects.

The Youngest

More than ever before were the tryouts for the school play a success. The number of those who signed up is probably twice as many as last year.

"The Youngest," written by Phillip Barry, has been chosen to be presented as our annual play. It is, in contrast to last year's play, of the present generation. It is a comedy, "howlingly" funny and true to life.

Richard Winslow is a young man just out of college. He spends all his time "mooning" about and writing stories which he tries in vain to sell. For this reason and because he is "the youngest," his whole family picks on him until he is almost afraid to call his soul his own.

Mrs. Winslow, his mother, is a widow, and being very retiring and timid, leaves all money and matters of importance to her oldest son, Oliver. He, his other brother Mark, his married sister Augusta, and Mar-

Port Defeats Far Rockaway 6 -- 3

Far Rockaway started by kicking to Port. Erb made fifteen yards off tackle after which Port, failing to gain kicked to Far Rockaway. Far Rockaway also failed to gain and kicked to Thoman. Port made two first downs but failed to make the third, losing the ball on downs. Renard then got free for a fifteen-yard run but was tackled by Captain Enscoe. Far Rockaway completed a ten-yard pass as the quarter ended.

Far Rockaway being on our twenty-five-yard line was successful in an attempted field goal, the first score in the game. Far Rockaway then kicked off to Port, who in a series of end runs and line bucks marched the ball fifty-five yards to within two yards of the goal, but Far Rockaway held us for downs and in an attempt to punt out of danger kicked behind the goal, a Far Rockaway man recovering the ball for a touchback. After Port received Goldman's punt from the twenty-yard line Enscoe passed to Erb, making thirty yards as the half ended with the score Far Rockaway 3, Port 0.

Far Rockaway again kicked off to Port. After Erb and Enscoe completed a first down they failed to gain further and punted. Far Rockaway failed to gain and returned the punt. Enscoe then passed to Erb, making twenty yards, after which Far Rockaway recovered a fumble but again kicked. Erb again completed a pass from Enscoe. Port next recovered its own kick which Librezzi fumbled. Enscoe made fifteen yards off tackle, thus ending the quarter.

Rothegeen next completed a pass,

tha, the youngest girl of the family, make Richard's life miserable.

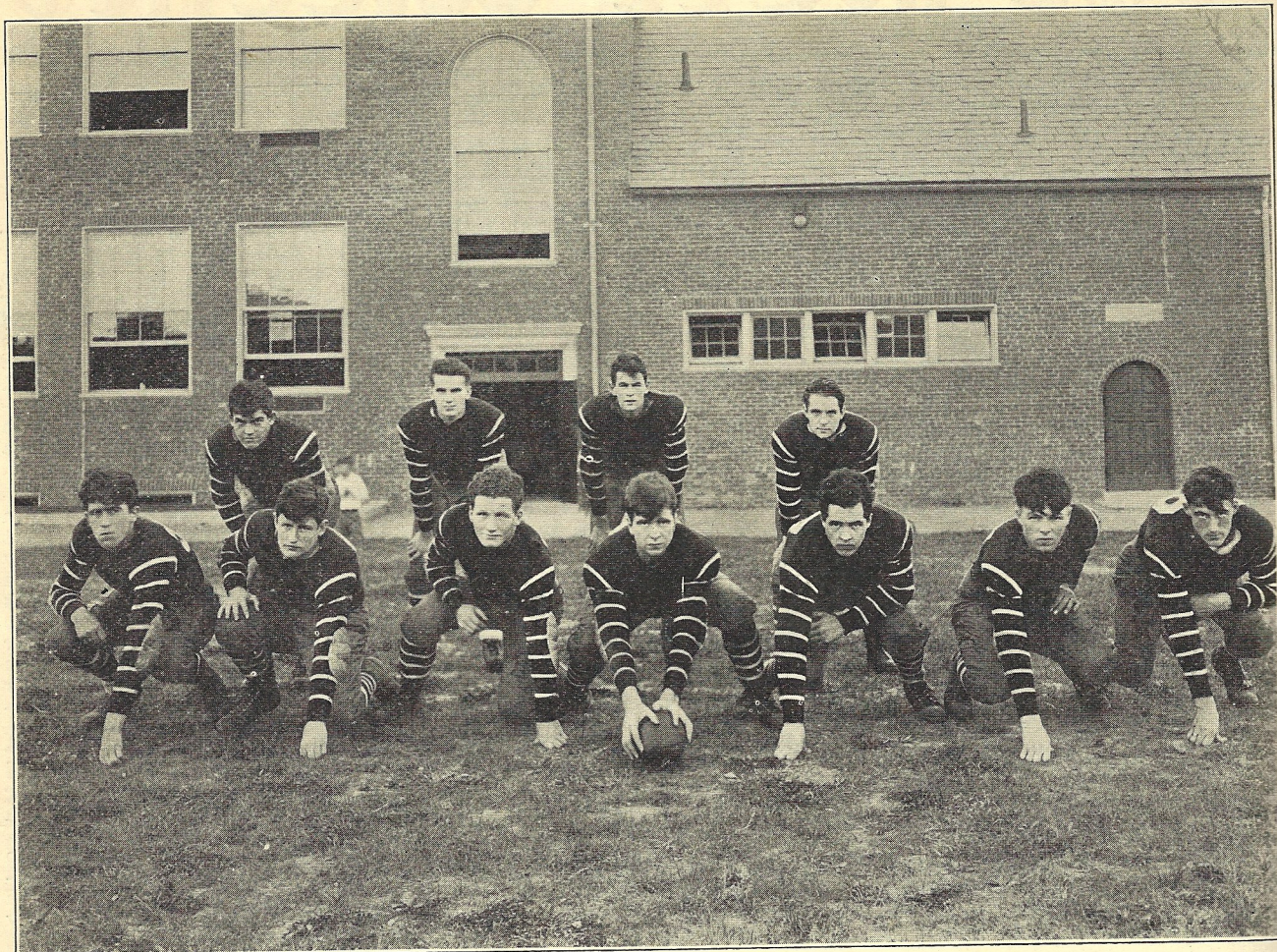
The most interesting part of the play, however, follows when Nancy Blake, a very young, pretty and aristocratic friend of Muff's comes to spend some time with the Winslows. She sees Richard's dire need of courage and immediately sets about giving it to him. She succeeds by — well, come and see her. Perhaps the girls can guess already how she manages Young Master Richard. Maybe they have tried tricks like that themselves. Nancy's success brings about an overwhelming upset of all the family affairs and Richard and Nancy herself are entrapped by the recoil.

The keenness of the competition for parts and the good sportsmanship of all the competitors have been features of the work in the tryouts.

The names of those chosen as members of the cast will be announced this week.

Friday evening, December 3, is the probable date of presentation.

The Port Weekly



OUR TEAM

R.E.—J. Lyden
R.T.—Chambers

R.G.—Miller
C.—Newland

L.G.—Bruce
L.T.—MacVicar

L.E.—Stone
Q.—Thoman

F.B.—Enscoe
(Capt.)

L.H.—Evanosky
R.H.—Erb

making eight yards. Then Enscoe in successive gains crossed the goal, making a total of thirty-eight yards, but the try for point failed. Port then kicked off. Far Rockaway completed a pass, but on the next play lost twelve yards. Renard then punted to Thoman who ran it back twenty yards. After failing to gain, Enscoe returned the punt. Newland intercepted a forward pass, running seven yards before he was stopped. Far Rockaway recovered a fumble and punted out of danger as the game ended.

We are surely proud of our team for its fine showing against Far Rockaway, for they out-played their opponents from every stand-point, making fifteen first downs to Far Rockaway's two.

First Home Game

This week we play our first home game with Riverhead in the field behind the new school. Riverhead is quite a large high school, which means that the team will need all the support possible. The fact that it

will be a hard game is all the more reason that we should be on hand to cheer the team. Remember there will be bleachers with a seating capacity of two hundred.

Line-up

Far Rockaway (3)		Port (6)	
Mansfield	l.e.	DeMeo	
Honnen	l.t.	Terrell	
Ballard	l.g.	Bruce	
Nathanson	c.	Newland	
Hendler	r.g.	Miller	
Gleitsman	r.t.	Chambers	
Rhodes	r.e.	Rothegen	
Cohen	q.b.	Thoman	
Rinzenback	l.h.b.	Erb	
Dingham	r.h.b.	Evanosky	
Librizzi	f.b.	Enscoe	
Port Washington		0 0 0 6—6	
Far Rockaway		0 3 0 0—3	

Umpire—VonMechon, N. Y. U. Referee—Young, Penn State. Linesman—MacAvoy, Columbia. Time of periods—12 minutes.

Substitutions — Port, Clarkson for DeMeo; DeMeo for Clarkson; MacBrian for Bruce; Tins for Terrell; Neusel for Thoman.

Jr. High Notes

Basketball is swinging along strongly with ten likely looking varsity candidates but there is a need and a welcome for the smaller lads to come out. Fundamentals are being drilled and these next few weeks boys can learn to pass, pivot and play with a definite organization. Boys who are not ready to play themselves are welcome to watch practice.

Louie Assumes New Title

Miss Shafer (calling for various reports on important men): "George Rogers Clark, that's you isn't it Louie?"

If you want your Printing done right and priced right, see us.

CASE THE PRINTER

One Block from Station, Flushing